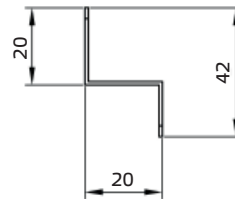
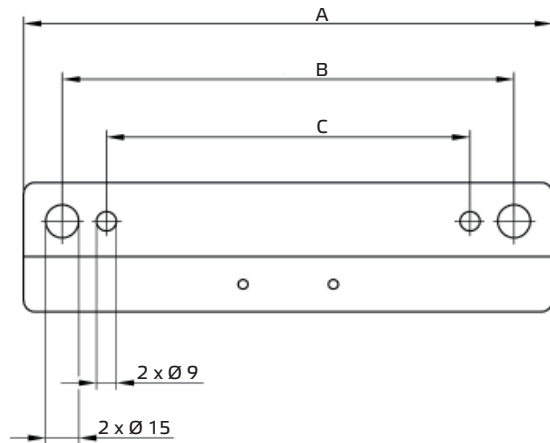


Montagekonsole MRS



| Typ | ID | For models: | A mm | B mm | C mm | Gewicht kg |
|-------|--------|----------------------------|---------|---------|---------|---------------|
| MRS 1 | 110094 | RS 100 - RS 150, RS 160 | 245 | 205 | 165 | 0,3 |
| MRS 2 | 110095 | RS 150L, RS 160L - RS 315L | 340 | 300 | 260 | 0,4 |

- Montagekonsole für Metallrohrventilatoren RS
- Stahlblech, verzinkt

Lieferumfang:

- 1 Halter
- 2 Kreuzschlitzschrauben, 6 x 45 mm
- 2 Dübel, 8 x 40 mm